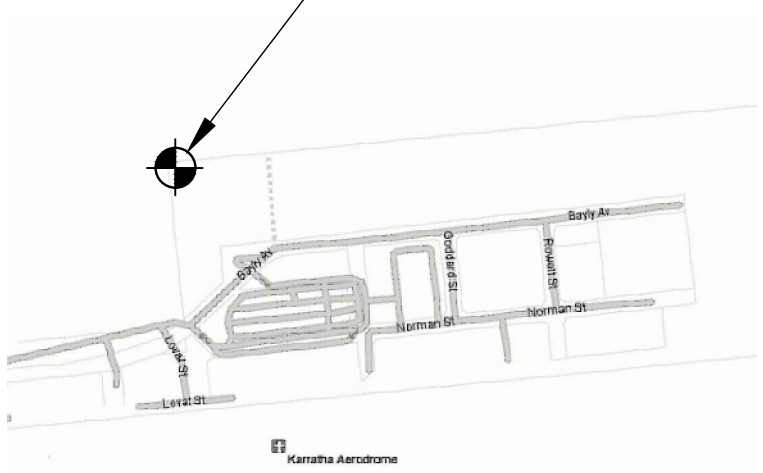
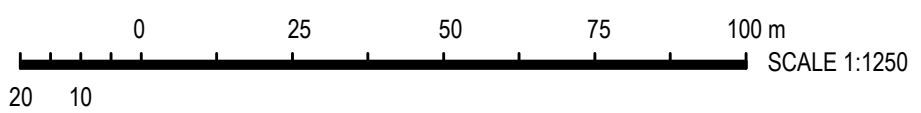


Copyright © Whereis® Registered Trademark of Sensis Pty Ltd.

LOCALITY PLAN
NOT TO SCALE



SITE LOCALITY AND ACCESS



SITE STRUCTURE CO-ORDINATES (GDA94) DERIVED FROM LANDGATE CENTRE OF MONOPOLE	
LATITUDE	-20.706385 (GDA94)
LONGITUDE	116.76877 (GDA94)

Aurecon Australia Pty Ltd
Level 1, Septimus Roe Square
256 Adelaide Terrace, Perth
Western Australia 6000 Australia

ABN 54 005 139 873
Telephone: +61 8 6145 9300
Facsimile: +61 8 6145 5020
Email: perth@aurecongroup.com

A person using Aurecon drawings and other data accepts the risk of:
1. using the drawings and other data in electronic form without requesting and checking them for accuracy against the original hard copy versions;
2. using the drawings or other data for any purpose not agreed to in writing by Aurecon.

PRELIMINARY

- NOTES :
- ALL ACCESS POINTS ON THE STRUCTURE MUST BE BIRD PROOFED AS PER EXTERNAL PLANT POLICY 003615.
 - FOR EME SIGNS NOTED #X REFER TO 005486 DOCUMENTS FOR DETAILS.
 - THIS DRAWING IS A PRELIMINARY DRAWING ONLY AND IS ISSUED FOR COMMENT. IT IS NOT A DETAILED SURVEY / STRUCTURAL DRAWING AND THEREFORE COULD BE SUBJECT TO CHANGE.
 - ALL DIMENSIONS ARE IN MILLIMETRES UNLESS OTHERWISE STATED.
 - FINAL LOCATION OF POWER ROUTE AND FIBRE LINK CABLE SUBJECT TO TELSTRA, PROPERTY OWNER AND HORIZON POWER REQUIREMENTS.

ORDER	DRAWN	CHKD	AMENDMENT	EXAM	APPD	DATE	ISS
WA05766.01	CN	CB	PRELIMINARY 71580829W0001	CB	CJH	25.02.14	1

© Telstra Corporation Limited ABN 051 775 556

All rights reserved.

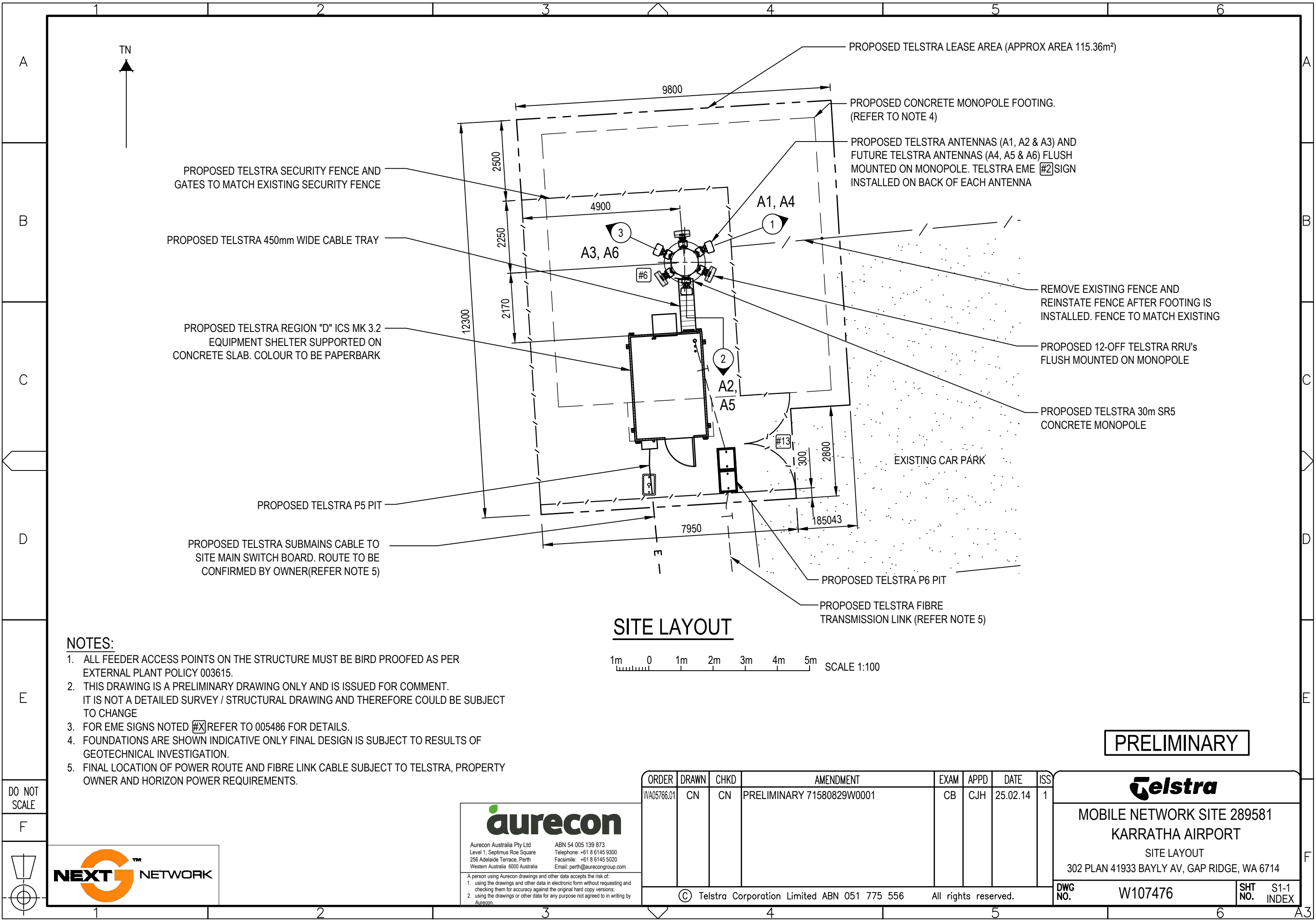
MOBILE NETWORK SITE 289581
KARRATHA AIRPORT
SITE LOCALITY AND ACCESS
302 PLAN 41933 BAYLY AV, GAP RIDGE, WA 6714

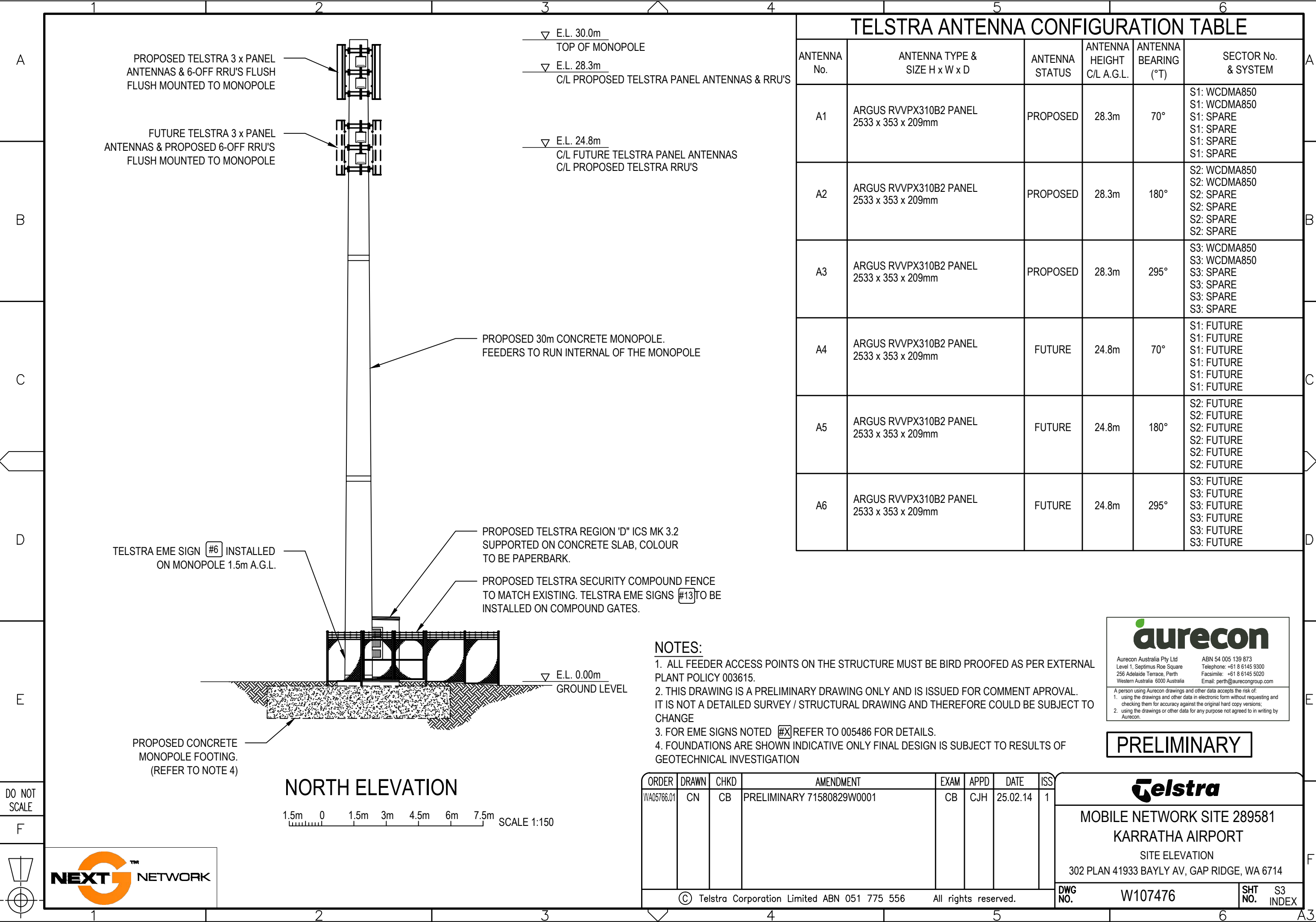
DWG NO.

W107476

SHT NO.


S1 INDEX





TELSTRA ANTENNA CONFIGURATION TABLE					
ANTENNA No.	ANTENNA TYPE & SIZE H x W x D	ANTENNA STATUS	ANTENNA HEIGHT C/L A.G.L.	ANTENNA BEARING (°T)	SECTOR No. & SYSTEM
A1	ARGUS RVVPX310B2 PANEL 2533 x 353 x 209mm	PROPOSED	28.3m	70°	S1: WCDMA850 S1: WCDMA850 S1: SPARE S1: SPARE S1: SPARE
A2	ARGUS RVVPX310B2 PANEL 2533 x 353 x 209mm	PROPOSED	28.3m	180°	S2: WCDMA850 S2: WCDMA850 S2: SPARE S2: SPARE S2: SPARE
A3	ARGUS RVVPX310B2 PANEL 2533 x 353 x 209mm	PROPOSED	28.3m	295°	S3: WCDMA850 S3: WCDMA850 S3: SPARE S3: SPARE S3: SPARE
A4	ARGUS RVVPX310B2 PANEL 2533 x 353 x 209mm	FUTURE	24.8m	70°	S1: FUTURE S1: FUTURE S1: FUTURE S1: FUTURE S1: FUTURE
A5	ARGUS RVVPX310B2 PANEL 2533 x 353 x 209mm	FUTURE	24.8m	180°	S2: FUTURE S2: FUTURE S2: FUTURE S2: FUTURE S2: FUTURE
A6	ARGUS RVVPX310B2 PANEL 2533 x 353 x 209mm	FUTURE	24.8m	295°	S3: FUTURE S3: FUTURE S3: FUTURE S3: FUTURE S3: FUTURE

- NOTES:
- ALL FEEDER ACCESS POINTS ON THE STRUCTURE MUST BE BIRD PROOFED AS PER EXTERNAL PLANT POLICY 003615.
 - THIS DRAWING IS A PRELIMINARY DRAWING ONLY AND IS ISSUED FOR COMMENT APPROVAL. IT IS NOT A DETAILED SURVEY / STRUCTURAL DRAWING AND THEREFORE COULD BE SUBJECT TO CHANGE
 - FOR EME SIGNS NOTED [X] REFER TO 005486 FOR DETAILS.
 - FOUNDATIONS ARE SHOWN INDICATIVE ONLY FINAL DESIGN IS SUBJECT TO RESULTS OF GEOTECHNICAL INVESTIGATION



Aurecon Australia Pty Ltd
Level 1, Septimus Roe Square
256 Adelaide Terrace, Perth
Western Australia 6000 Australia

ABN 54 005 139 873
Telephone: +61 8 6145 9300
Facsimile: +61 8 6145 5020
Email: perth@aurecongroup.com

A person using Aurecon drawings and other data accepts the risk of:
1. using the drawings and other data in electronic form without requesting and checking them for accuracy against the original hard copy versions;
2. using the drawings or other data for any purpose not agreed to in writing by Aurecon.

PRELIMINARY

ORDER	DRAWN	CHKD	AMENDMENT	EXAM	APPD	DATE	ISS
WA05766.01	CN	CB	PRELIMINARY 71580829W0001	CB	CJH	25.02.14	1

© Telstra Corporation Limited ABN 051 775 556All rights reserved.



MOBILE NETWORK SITE 289581
KARRATHA AIRPORT
SITE ELEVATION
302 PLAN 41933 BAYLY AV, GAP RIDGE, WA 6714

DWG NO. W107476

SHT NO. S3 INDEX